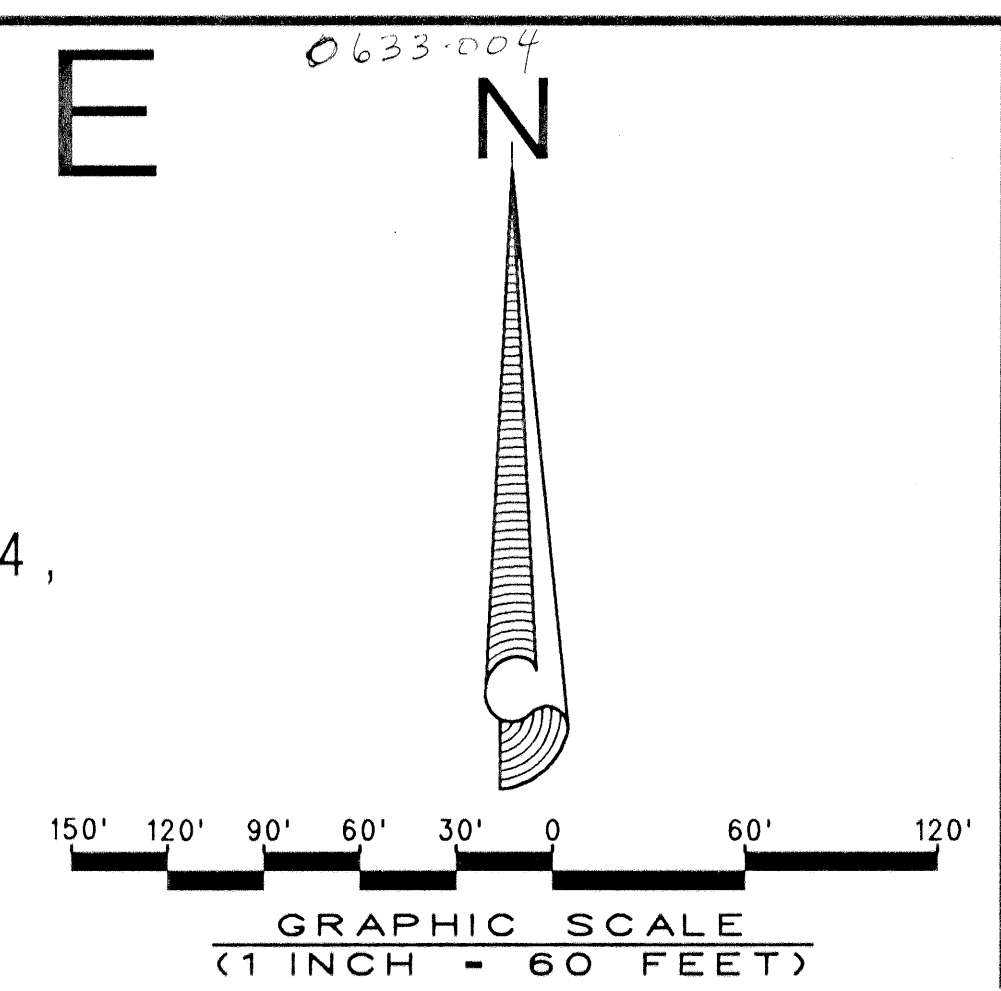
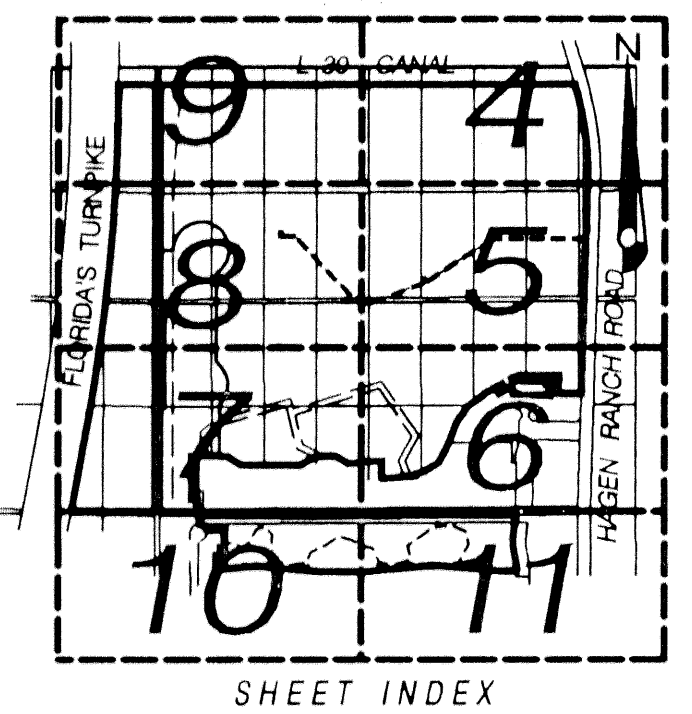


POLO TRACE II GOLF COURSE

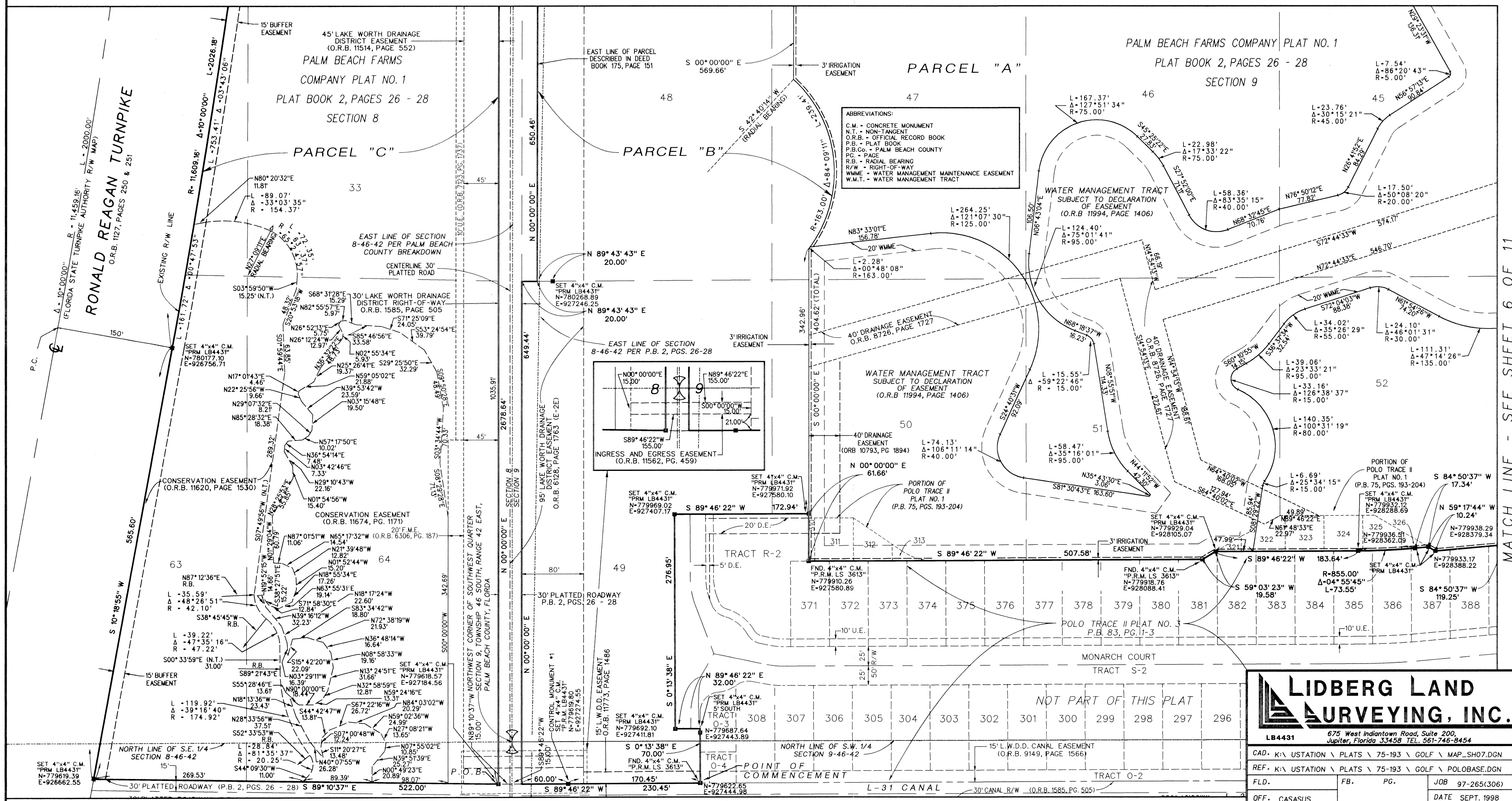
(A PART OF POLO TRACE II P.U.D.)

BEING A REPLAT OF A PORTION OF PALM BEACH FARMS COMPANY PLAT NO. 1,
 ACCORDING TO THE PLAT THEREOF, AS RECORDED IN PLAT BOOK 2, PAGES 26 - 28,
 ALSO BEING A REPLAT OF A PORTION OF POLO TRACE II, PLAT NO. 1
 ACCORDING TO THE PLAT THEREOF, AS RECORDED IN PLAT BOOK 75, PAGES 193 - 204,
 PUBLIC RECORDS OF PALM BEACH COUNTY, FLORIDA.

LYING IN SECTIONS 8 AND 9, TOWNSHIP 46 SOUTH, RANGE 42 EAST
 PALM BEACH COUNTY, FLORIDA
 JUNE, 2000 SHEET 7 OF 11



MATCH LINE - SEE SHEET 8 OF 11



MATCH LINE - SEE SHEET 10 OF 11

MATCH LINE - SEE SHEET 6 OF 11

LIDBERG LAND SURVEYING, INC.
 LB4431 675 West Indiantown Road, Suite 200, Jupiter, Florida 33458 TEL. 561-746-8454

CAD. K:\USTATION\PLATS\75-193\GOLF\MAP_SH07.DGN	REF. K:\USTATION\PLATS\75-193\GOLF\POLOBASE.DGN
FLD.	FB. PG. JOB 97-265(306)
OFF. CASASUS	DATE SEPT. 1998
CKD. D.C.L.	SHEET 7 OF 11 DWG. D97-255P

POLO TRACE II GOLF COURSE
 SHEET 166
 FLOOD MAP # 200A
 ZONING PD0
 ZIP CODE 33444
 FILE NAME POLO TRACE II